

//

# Kono Chair



Kono office-chair is the new appealing model suitable for every type of environment, from home office to workplace. The chair is clean, versatile and smartly designed, with three different back heights, low, medium and high. The armrest is anchored to the structure of the chair and available in polished aluminium, black or white finish and in two different sizes. The mechanism tilts (front to back) and allows the user to adjust the height of the chair with a lever which is available in polished aluminium, black and white painted. The highback Kono is available with an optional headrest.

---

**Origin**  
Italy

**Warranty**  
5 Years

---

**PERTH**  
246 Hay Street  
Subiaco WA 6008  
Australia  
(08) 9388 1855  
perth@district.com.au

**MELBOURNE**  
20 Russell Street  
Melbourne VIC 3000  
Australia  
(03) 9654 1060  
melbourne@district.com.au

**SYDNEY**  
New South Wales  
Sydney NSW 2000  
Australia  
(03) 9654 1060  
sydney@district.com.au

## DIMENSIONS

### Low Chair

680mm W x 680mm D x 830-960mm BH  
Seat & Armrests - 500mm W  
Shell - 540mm D

### Medium Chair

680mm W x 680mm D x 1040-1170mm BH  
Seat & Armrests - 500mm W  
Shell - 540mm D

### High Chair

680mm W x 680mm D x 1220-1350-1170mm BH  
Seat & Armrests - 500mm W  
Shell - 610mm D

### Low Chair With Arms

680mm W x 680mm D x 680-830mm BH  
Seat & Armrests - 600mm W  
Shell - 540mm D

### Medium Chair With Arms

680mm W x 680mm D x 1040-1170mm BH  
Seat & Armrests - 600mm W  
Shell - 560mm D

### High Chair With Arms

680mm W x 680mm D x 1220-1350mm BH  
Seat & Armrests - 610mm W  
Shell - 610mm D

## MATERIALS

Polyurethane Foam, Timber Shell, Aluminium Armrest & Base, Upholstery

## FINISHES

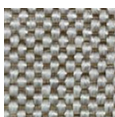
Frame - Black or White Painted

## FEATURES

Gas Lift/ Height Adjustable Seat  
Other fabrics available with MOQ 30 pieces

## STANDARD UPHOLSTERY

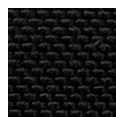
Anbel  
100% Polypropylene



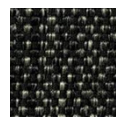
Beige



Light Grey



Black



Dark Grey