

D / I S T R I C T



# Slim Chair 4 Arm



The slim collection of seats designed by British duo PearsonLloyd acquires a new family: slim chair. Essential and ergonomically designed, the new creation interprets most effectively the theme of the quintessential contemporary seat and is the company's first polypropylene seat, produced with a view to rounding off the Alias product line while continuing to give undivided attention to design.

**Designer**  
PearsonLloyd

**Warranty**  
10 Years

PERTH

246 Hay Street  
Subiaco WA 6008  
Australia  
(08) 9388 1855  
perth@district.com.au

MELBOURNE

20 Russell Street  
Melbourne VIC 3000  
Australia  
(03) 9654 1060  
melbourne@district.com.au

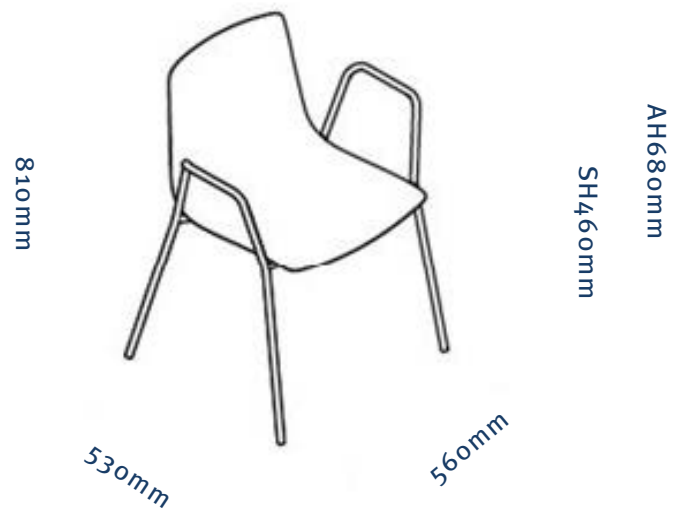
SYDNEY

sydney@district.com.au

 @district\_au

 facebook.com/districtau

## DIMENSIONS



## MATERIALS

Steel frame // Polypropylene seat

## FRAME FINISHES



CR

Chromed Steel



A011



A019



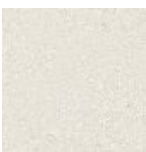
A022



A047

Stove Enamelled Steel

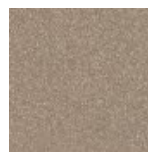
## SEAT FINISHES



PP01



PP02



PP03



PP04



PP05

Polypropylene

## COLLECTION

Slim Chair 4 // Slim Chair 4 Arms // Slim Chair Sledge Arms // Slim Chair Wood //  
Slim Chair Sledge